

Sunfrail Seminar

EIP-AHA and Sunfrail:
Preliminary results and Good practices

Albert Borschette Conference Centre
European Commission - Room 1C
Rue Froissart 36, 1040 Brussels

April 5, 2017



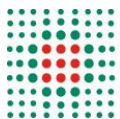
Photo credit: Eric Stock / Eikonur

Agenzia
sanitaria
e sociale
regionale

 **Regione Emilia-Romagna**

Programmes on Ageing in Emilia Romagna Region

Maria Luisa Moro



Emilia-Romagna Region: a snapshot



- ✓ 4.500.000 inhabitants
- ✓ 24 % over 65 years
- ✓ 12% over 75 years

Residential care

- ✓ More than 25,000 elderly in nursing homes/residential homes (27% 85-89 yrs; 32% > 89 yrs)

Hospital care

- ✓ More than 18,000 hospital beds (> than 75% in public hospitals)

Primary Health Care

- ✓ 38 Local Health Districts
- ✓ 204 General Practitioners Groups
- ✓ 87 Community Health Centres (*Case della Salute*) – 35 more planned
- ✓ 14 Nurse-managed Community Hospitals



Primary Health Care



Health and Consumers Directorate General (DG SANCO) 2014

...the provision of universally accessible, person-centered, comprehensive health and community services provided by a

team of professionals

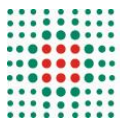
accountable for addressing a large majority of personal health needs.

These services are delivered

in a sustained partnership with patients and informal caregivers,

in the context of family and community,

and play a central role in the overall coordination and continuity of people's care...



Primary Health Care

– Innovation in Emilia-Romagna Region -



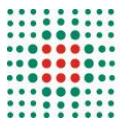
Innovative Health Services



Innovative organizational models and new strategies to involve the communities



Innovative ways of regional data analysis and linking



SERVIZIO SANITARIO REGIONALE
EMILIA-ROMAGNA



Agenzia
sanitaria
e sociale
regionale



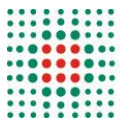
Regione Emilia-Romagna

Primary Health Care

– Innovation in Emilia-Romagna Region -

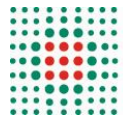


Innovative Health Services

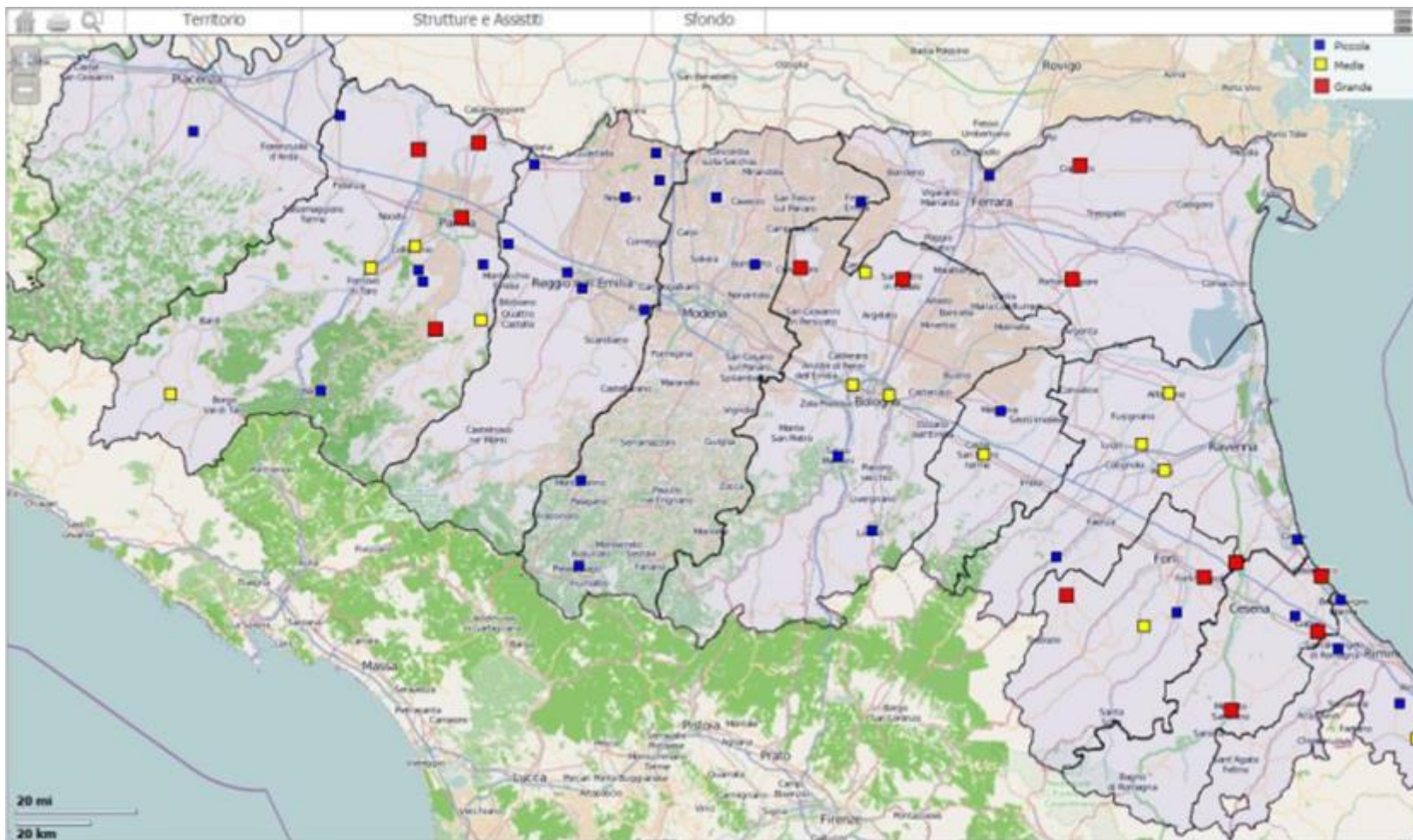


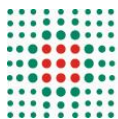
Community Health Centers (Case della Salute)

- **team-based** health care delivery model
- provision of **comprehensive and continuous medical care** to patients within a defined community
- in Emilia-Romagna Region since 2010
- **Integration of professionals** (GPs, paediatricians, out of hour service doctors, outpatient specialists, nurses, obstetricians, and social workers)
- **different degrees of complexity** depending on the density of the reference community population and their geographical location.



87 Community Health Centers (Casa della Salute) 2 million residents





Community Hospital

- unique **model**
- **nurse managed**
- limited number of beds (usually less)
- clinical responsibility with **GPs** or Local Health Unit physician
- involvement of physiotherapists and careworkers

Type of care

- nursing care
- rehabilitation (physical, respiratory and cognitive)
- promotion of patient **empowerment** and **self-management**
- **care giver** training



14 Nurse managed Community Hospitals





Integrated Care

Multidisciplinary, Integrated, and Participated Pathways of Care

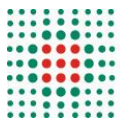
***Ambulatory
(Nurse-Based)
Care for Chronic
Diseases***

All in One...

**Community
Hospitals**

**Integrated
Home-Based Care**





Primary Health Care

– Innovation in Emilia-Romagna Region –



Innovative ways of
regional data analysis
and linking



Innovative organizational
models and new strategies to
involve the communities



Involvement of the communities

Communities are involved in identifying which are the more suitable models for their areas (Majors, Citizens, Local Health Trusts,...)



Regular meetings with the communities



NCP San Secondo

Il tè del Giovedì

Nucleo Cure Primarie "San Secondo"
San Secondo - Trecasali - Roccabianca - Sissa
Piazza Martiri della Libertà 24 - San Secondo Parmense

*Incontri di educazione sanitaria
(per tutta la popolazione)*



Open data

Salute

Sistema Informativo Politiche per la Salute e Politiche Sociali

... ?

stats viewer indicatori search

E-R | Salute > SISEPS > ReportER > PRIM

PRIM - Demografia ed Epidemiologia

Composizione NCP **Trattamento malattie croniche** Multimorbidity

Selezioni

Anno *i* Tutti 2015 2014 2013 2012

Condizioni croniche *i* Asma BPCO Cardiopatia ischemica Condizioni reumatologiche Diabete mellito

Prevalenza di trattamento delle malattie croniche

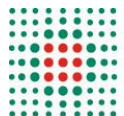
Prevalenza del trattamento di specifiche condizioni croniche stimata utilizzando i dati sul consumo di prestazioni sanitarie e sulle esenzioni per patologia.

[Dettaglio Scheda](#)

Tabella Mappa Grafico

Asthma, COPD,
Rheumatology,
Diabetes,
ESRD,
Hyperlipidemia ,
Iperplasia prostatica,
Hypertension,
Parkinson,
CHF

<http://salute.regione.emilia-romagna.it/siseps/sanita/prim/analisi-statistica/reportistica-predefinita-nuclei-cure-primarie>

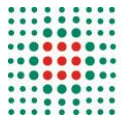


The Sunfrail Project: ensuring early detection and management of frailty and multimorbidity

The Sunfrail tool



Reference Sites Network for Prevention and
Care of Frailty and Chronic Conditions in
community dwelling persons of EU Countries



<http://salute.regione.emilia-romagna.it/documentazione/multimedia/video/the-one-stop-home-for-healthcare>

Emilia-Romagna Region

- ✓ General Directorate for Care of the person, Health and Welfare
- ✓ Health and Social Regional Agency

